



# K-Othrine<sup>®</sup> FLOW 25

## Uncertain ownership?

We help you make sure that  
pests don't take over the house.

Talk to Bayer Pest Management Experts.



## ACTIVE INGREDIENT

Deltamethrin 2.5 %

## RECOMMENDED USES

Useful for effective control of cockroaches, house flies and mosquitoes in houses as a residual spray on surfaces and for bed net impregnation to protect against adult mosquitoes

## MODE OF ACTION

Non-systemic insecticide with contact and stomach action

## BENEFITS

- Broad spectrum activity
- No organic solvents
- Effective in low dosages
- Non-greasy, non-staining, odourless
- HACCP certified
- WHO evaluated

## DOSAGE

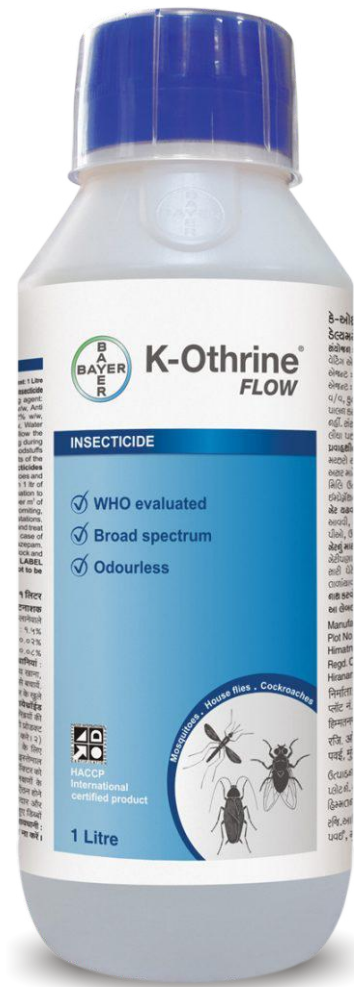
For residual spray, dilute 10 ml/ litre of water to cover 10-20 m<sup>2</sup> of area. For bednet impregnation, use 1 ml of formulation per sq. mt of the bednet area

## ANTIDOTE

Anti histamines, diazepam and other symptomatic treatment

## PACKS

50 ml, 1 Litre



**Household Insecticide**  
for General Insect Control



### Corporate Office:

#### Crop Science - Environmental Science

Bayer House, Central Avenue, Hiranandani Estate  
Thane (West) - 4000 607. Maharashtra, India.

#### Customer Care Cell:

E-mail: [customercare@bayer.com](mailto:customercare@bayer.com)

Tel.: 022 - 2531 1234

 Toll Free: 1800 209 5666

 Choose Safety Choose Bayer

 [www.environmentalscience.bayer.in](http://www.environmentalscience.bayer.in)



Bayer